

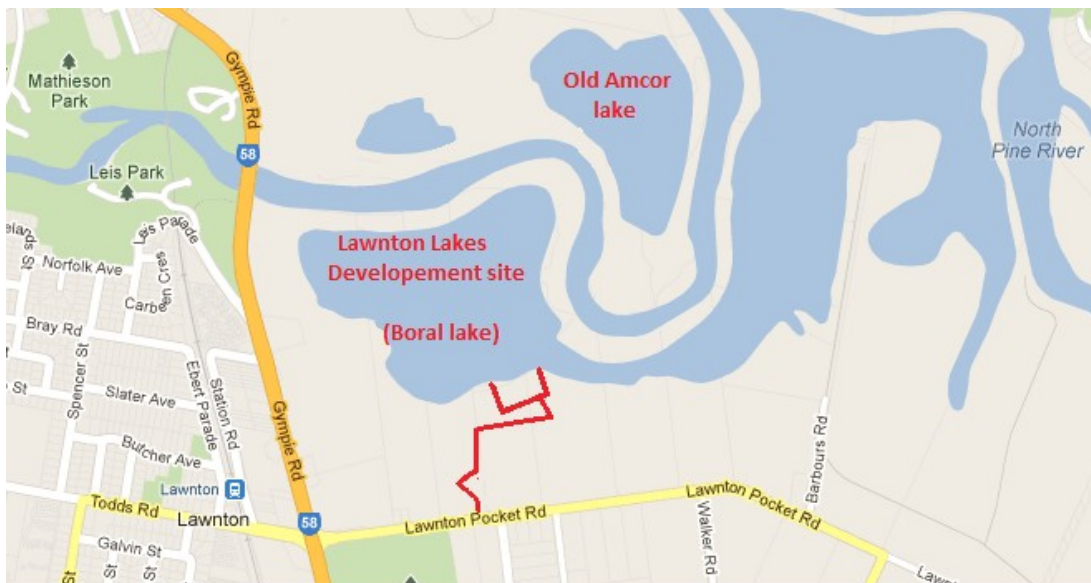
A.M.P.B.A.

2019 Queensland 1/2 K Oval speed.

* competition is sanctioned only for Sunday the 19th of May 2019.

* Lawnton Lakes Development site (formally Boral lakes) 232 Lawnton Pocket road, Lawnton, Queensland.

Hosted by - Brisbane Model Marine Club.



BMMC - 1/2 K Oval speed 2019

The Brisbane Model Marine Club inc would like to invite all financial members of the Australian Model Power Boat Association to attend the AMPBA sanctioned, BMMC 2019 - 1/2 K Oval speed event.

Location - Lawnton Lakes Development site - 232 Lawnton Pocket road, lawnton, Queensland

Event schedule - Sun 19th May 2018

Competition hours

8.00 - 8.15 Drivers meeting

8.15 - 15.00 1/2 K Oval trials

15.00 - Scrutineering

Enquiries -

Danny Bull

0411 340 829

sonic_racing@optusnet.com.au

Entry fees -

\$30 for the first boat, \$10 for each additional boat.

Fees may be paid via cash, cheque, money order or bank deposit.

Cheques or money orders to be made payable to Brisbane model Marine inc.

Bank deposit details as follows;

Account name. Brisbane Model Marine inc.

BSB 084929

Account number 751313788

Entries to -

Completed entry forms will be accepted by email, post or in person.

Only signed entries received on the official form will be accepted.

Post to; BMMC Treasurer

51 Woondaree Street

Bracken Ridge. QLD. 4017

Email to: sonic_racing@optusnet.com.au

Entries close -

Friday the 10th May 2018

The BMMC committee reserves the right to cancel this meeting if insufficient entries are received by the closing date of Friday the 10th May 2018. In this instance, all entry fees received will be refunded.

As this is a one day event, the race organizers reserve the right to limit the number of competitors/ entries should they exceed the maximum number of attempts that could be run.

EVENT RULES and ADDITIONAL INFORMATION

- * All officials, competitors and pit crews must be financial members of the AMPBA.
- * Competition hours may vary depending on conditions.
- * All current AMPBA rules will apply.
- * An electronic timing system will be used for this meeting. Manual system as a back up only.
- * Compulsory Drivers Meetings at the commencement of the day.
- * All competitors and pit crews are forbidden to consume alcohol until the completion of the days event.
- * Only competitors, pit crews and race officials allowed in the pit area.
- * Enclosed shoes must be worn in the hot pit area and in the backup pit area.
- * A Contest Director will oversee the competition; his/her decision is final.
- * Petrol Class competitors to supply their own fuel as per Rule 14.4 of the AMPBA Rule Book.
- * All boats and petrol class fuel must be available at any time during and after the event for scrutineering.
- * Mandatory scrutineering for all record setting boats, petrol class boats will also have fuel tested.
- * FE boats will have batteries inspected/ weighed immediately following a successful record attempt.

BMMC 1/2 K oval speed- 19th of May 2019

Venue - Lawnton lakes developement, Lawnton. QLD. (formally Boral lake)

Class		Frequency	Alt Freq.	Fees	Name _____
Mono	A				Address _____
	B				Phone _____
	C				Email _____
	X				AMPBA number _____
	P27				
	P Open				
	EA				
	EB				
	EC				
Hydro	A				Club _____
	B				Signature _____
	C				
	X				
	M (twins)				
	P27				
	P Open				By signing this form, you agree to abide by all AMPBA rules and those listed on these entry forms.
	P twin				
	Sport 40				
	1/8 Scale				Entry fees -
	P Sports 27				\$30 for first boat
	P Sports Open				\$10 for each additional boat
	EA				
	EB				Entries close Friday 10th May 2019
	EC				No late entries or late payment will be accepted. No entries at the venue will be accepted.
EA Sports					
EB Sports					
EC Sports					
Tunnel	A				Entries with payment details to -
	B				
	C				BMMC Treasurer
	X				51 Woondaree Street
	P27				Bracken Ridge. QLD. 4017
	P Open				or
	A O/B				Email to -
	A Sport O/B				sonic_racing@optusnet.com.au
	B O/B				Cheques and money orders payable to
	C O/B				Brisbane Model Marine Club inc.
	X O/B				
	EA				Banking details for direct deposits -
	EB				Brisbane Model Marine inc
	EC				BSB - 084929
Offshore	Lites mono				Account number - 751313788
	Lites cat				
	Class 1 mono				
	Class 1 cat				
	Class 2 mono				
	Class 2 cat				
Payment by - Cash / Cheque / Money order / Bank				Total fees	
Entry form by - Email / Post / In person				\$0.00	
					Office use only
					Date entry received
					/ / 2019
					Date payment received
					/ / 2019